

Newhey Carpets
Gordon Street, Newhey,
Rochdale, OL16 3SL

sales@newheycarpets.co.uk
www.newheycarpets.co.uk
www.newheyexpress.co.uk

Sample Requests
+44 (0)1706 846 375
enquiries@newheycarpets.co.uk

Design Studio
+44 (0)1706 888 998
design.team@newheycarpets.co.uk

Disclaimer
Connect Naturals is produced using natural
wools and as a result of this, shade variation
may occur between batches. If exact shade
representation is required please contact the
sales office for samples obtained from our
current stock material. Natural shades may not
perform under certain conditions and therefore
consideration must be made by the specifier
with regards to areas of usage and subsequent
appearance retention. Please refer to our
comprehensive Cleaning and Maintenance
guidelines relating to your Newhey product.

newhey

Great British carpet since 1968

Stock Collection

Connect Naturals



newhey

Great British carpet since 1968



© Newhey Carpets 2017. All copyright design
rights are the property of Newhey Carpets Ltd.
Colours are reproduced within the limits of the
printing process.

Designed by NeilHolroyd.studio; Photography Adrian Ray

Our Story

Newhey Carpets is a leading British manufacturer of contract carpets for the hotel, leisure and entertainment sectors. Applying 50 years of manufacturing and technical excellence, the company constantly embraces the very latest production techniques in order to deliver reliable, high performance products to its global customer base.

Driven by innovation, Newhey uses a mix of yarns and colours to develop unique solutions for commercial interior designers, all backed up by market leading after sales advice and support. The company is also at the forefront of the carpet sector in terms of reducing its carbon footprint through the development of low embodied energy. Newhey's advanced backing system utilises a unique solvent free application process to apply the revolutionary evobac, which is produced from 100% recycled plastic bottles.



A: Stratus

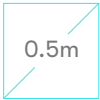


B: Storm



Slate (No pattern repeat)

Pattern repeat – A:	(L): 0.09m / (W): 0.20m
Pattern repeat – B:	(L): 0.97m / (W): 1.00m
Width:	4.00m
Total pile weight:	1,400g/m ² (41.30oz/yd ²)
Pile content:	80% wool / 20% nylon
Suitability:	Heavy commercial
Secondary backing:	evobac



Represents 0.5m x 0.5m

About the Collection

Along with the original Connect Naturals designs this collection now incorporates a basket weave design in five beautifully muted shades with four complimenting plain colourways manufactured using pure undyed wools.

All Newhey products are manufactured with evobac, a secondary backing made from recycled plastic bottles. Compliant with all standard British and European regulations for flammability and performance, evobac also offers a comprehensive range of benefits for installers including ease of handling, which is guaranteed through decreased risk of scuffing skirtings and paintwork. Other key benefits are improved anti-fraying properties, reduced wear on blades when cutting and compatibility with all traditional installation methods.



A: Horizon

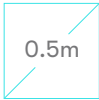


B: Quill



Silver (No pattern repeat)

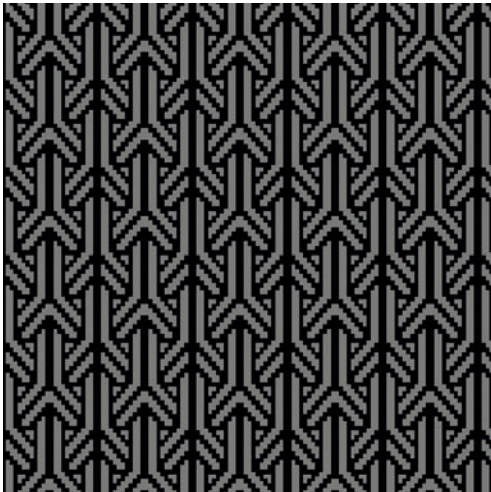
Pattern repeat – A:	(L): 0.09m / (W): 0.20m
Pattern repeat – B:	(L): 0.97m / (W): 1.00m
Width:	4.00m
Total pile weight:	1,400g/m ² (41.30oz/yd ²)
Pile content:	80% wool / 20% nylon
Suitability:	Heavy commercial
Secondary backing:	evobac



Represents 0.5m x 0.5m



Rug Close up – Summit & Slate



A: Summit

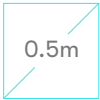


B: Sable



Slate (No pattern repeat)

Pattern repeat – A:	(L): 0.09m / (W): 0.20m
Pattern repeat – B:	(L): 0.97m / (W): 1.00m
Width:	4.00m
Total pile weight:	1,400g/m ² (41.30oz/yd ²)
Pile content:	80% wool / 20% nylon
Suitability:	Heavy commercial
Secondary backing:	evobac



Represents 0.5m x 0.5m



Horizon close up



A: Nimbus

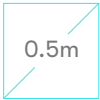


B: Starling



Ash (No pattern repeat)

Pattern repeat – A:	(L): 0.09m / (W): 0.20m
Pattern repeat – B:	(L): 0.97m / (W): 1.00m
Width:	4.00m
Total pile weight:	1,400g/m ² (41.30oz/yd ²)
Pile content:	80% wool / 20% nylon
Suitability:	Heavy commercial
Secondary backing:	evobac



Represents 0.5m x 0.5m



A: Atlas

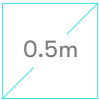


B: Polar



Steel (No pattern repeat)

Pattern repeat – A:	(L): 0.09m / (W): 0.20m
Pattern repeat – B:	(L): 0.97m / (W): 1.00m
Width:	4.00m
Total pile weight:	1,400g/m ² (41.30oz/yd ²)
Pile content:	80% wool / 20% nylon
Suitability:	Heavy commercial
Secondary backing:	evobac



Represents 0.5m x 0.5m