



MARINE FLOOR COVERINGS

creating better environments



FLOORING SYSTEMS

CONTENTS

Coral Marine FR	04
Technical specification	07
Flotex FR	08
Flotex FR Bespoke Design	10
Flotex FR collections	12
Flotex Colour FR	14
Flotex Vision FR	16
Flotex Designer collections	20
Technical specification	27

Background image: Flotex FR | bespoke design

CREATING BETTER **MARINE ENVIRONMENTS**

Forbo understands that material choice is one of the most critical aspects when designing for marine interiors.

The material sets the tone for the overall look and feel of a vessel with many criteria influencing the specification including aesthetics, durability, maintenance and the requirement of IMO certification. Add to this other performance requirements such as slip resistance, sound absorption, comfort, anti-static properties, cleanability and green credentials and it becomes obvious why flooring choice is a complex one.

Forbo Flooring Systems manufactures the widest range of floor coverings in the market and offers a portfolio of IMO and non IMO certified products. Our Key Account

Managers will help you, and provide all the expert advice you need when selecting flooring for your marine projects. In addition to our core collections, we also offer a custom design service to help you create unique flooring designs that perfectly match your interior requirements.

Where IMO certification is not required for any particular marine project please note that Forbo Flooring Systems also have a wide portfolio of commercial floor coverings including; rigid and textile entrance systems, linoleum, vinyl, safety vinyl, luxury vinyl tile, flocked flooring, carpet tile and needlefelt floor coverings.

coral[®] marine FR

TEXTILE ENTRANCE AND CORRIDOR FLOOR COVERINGS

Coral Marine FR | Sydney blue

coral[®] marine FR

Coral is the market leader in entrance systems providing an exceptionally versatile and proven range of 'clean-off' entrance system products and customisable carpets.

Wet and dry soiling brought on board on the soles of shoes and the tyres of wheeled traffic, make interiors look dirty and unattractive, causes structural damage to interior floor coverings and finishes and creates unnecessary health and safety hazards. If effective measures are not taken to avoid this problem, the repair and maintenance costs of a typical floor covering over its lifespan could be nine times the cost of the original investment. A well designed entrance flooring system will prevent dirt and moisture from being tracked and thereby prolong the life of interior flooring and reduce cleaning, repair and overall maintenance costs.

- **Stops up to 95% of walked in dirt and moisture**
- **High moisture absorption**
- **Excellent dirt storage/soil hiding**
- **Durable construction:
using a 60% wool/40% Nylon mix**
- **PVC and phthalate free**
- **Cut to size/shape option**
- **All references stocked for quick delivery**
- **Reduces cleaning costs and prolongs the
lifetime of on board floor coverings and finishes.**

Coral Marine FR is a cut pile floor covering consisting of 60% wool and 40% Nylon. It is the ideal choice for an entrance system, simultaneously absorbing moisture and removing dry soiling. Coral entrance systems can reduce cleaning costs and prolong the life of on-board floor finishes and coverings.

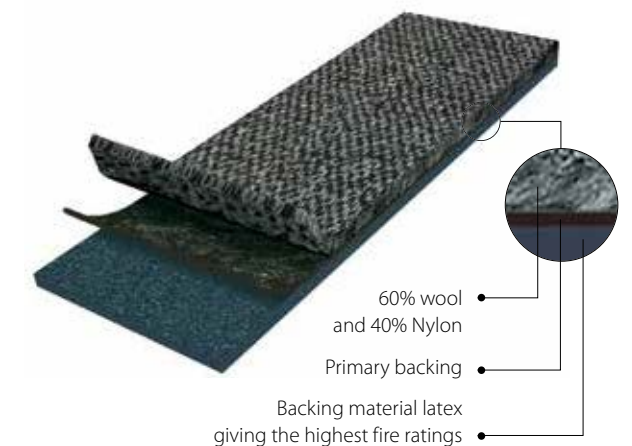
Coral Marine FR meets all the fire safety standards set by the International Maritime Organization (IMO) for products used in seagoing vessels. Yarn and backing systems have been developed to meet the stringent smoke toxicity and low flame spread standards required to achieve the IMO 'wheelmark'.

As a result Coral Marine FR can be used with confidence in cruise liners, passenger ferries, charter boats and other seagoing vessels, in addition to offshore facilities where the 'wheelmark' classification is required.

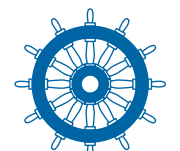


Coral Marine FR | Santos brown

Coral Marine FR construction



**Coral Marine FR is IMO tested and approved,
and wheelmarked in accordance with the
Maritime Equipment Directive (MED).**



0493/17 164.117/EC0493/Forbo_2017_0001



Coral marine FR | Hong Kong red

coral® marine FR



4210 | Rotterdam black



4201 | Singapore grey



4230 | New York black



4207 | Panama blue



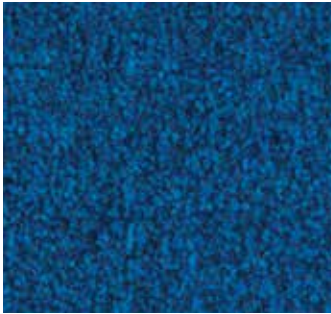
4223 | Hong Kong red



4204 | Santos brown














4226 | Tangier brown



4222 | Sydney blue

TECHNICAL SPECIFICATIONS – CORAL MARINE FR

Technical specifications

	Total thickness	ISO 1765	Approx. 9 mm						
	Area of use		Heavy use						
	Roll width		185 cm						
	Roll length		Roll length approx 27.5 m (customisable)						
	Colour fastness ratings:								
	Light	EN ISO 105/B02	> 5						
	Rubbing	EN ISO 105/X12	4						
	Water	EN ISO 105/E01	4-5						
	Seawater	EN ISO 105/E02	4						
	Shampoo	BS 1006	4-5						
	Organic solvents	EN ISO 105/X05	5						
	Construction		Tufted, 5/32" cut-pile						
	Designs		Mottled						
	Pile material		60% Wool / 40% polyamide						
	Tuft base		Non-woven polyester						
	Backing		FR latex						
	Total weight	ISO 8543	Approx. 2550 gram/m ²						
	Pile installation weight	ISO 8543	Approx. 1120 gram/m ²						
	Pile thickness	ISO 1766	Approx. 6 mm						
	Pile density	ISO 8543	0.141 gram/cm ³						
	Number of tufts	ISO 1763	Approx. 96,400/m ²						
	Impact noise reduction	EN ISO 717-2	Δ Lw = 31 dB						
	Sound absorption	EN ISO 354:2003	f(Hz):	125	250	500	1000	2000	4000
			αp:	0.05	0.05	0.1	0.3	0.55	0.6
	Slip resistance	EN 13893	DS						
	Body voltage	ISO 6356	< 2.0 kV antistatic						
	Thermal resistance	ISO 8302	0.125 m ² K/W						
	Fire rating:*								
	IMO Resolution A653(16)		Pass						
	IMO Resolution MSC 307(88) Annex 1 Parts 2 and 5		Pass						
	US Coast Guard approval ref: 164.117EC0493		EC0493/17						

*IMO tested and approved using 3mm steel subfloor and IMO certified Coral Fix, acrylic dispersion adhesive.

Final production might vary within commercial tolerances from sample.
Manufacturing specifications subject to normal industry tolerances.
Forbo reserves the right to improve the specification of its products without giving prior notice.
Errors and omissions excepted.



0493/17 164.117/EC0493/Forbo_2017_0001

flotex® FR

THE ONLY **IMO CERTIFIED,**
WASHABLE, TEXTILE
FLOOR COVERING

Flotex Vision FR | Cord orange

flotex® FR

Flotex FR is a unique, textile flocked floor covering, combining the cleaning properties and durability of a resilient flooring with the comfort, slip resistance and acoustic properties usually associated with textiles.

- High definition print offers you complete freedom of design
- Bespoke design service
- Lightweight approximately 1225 gram/m²
- Easy to clean
- Impervious backing makes it suitable for wet cleaning
- Excellent acoustic properties up to 22 dB
- Smooth textile velour like surface that is comfortable and warm underfoot
- Slip resistance >0.30
- Durable construction: using Nylon 6.6
- Improved indoor air quality (independently proven by Allergy UK)
- Easy to repair any damaged areas
- Flotex is ortho-phthalate free
- Cut to size/shape option.

Flotex FR is extremely dimensionally stable and has a velour-like surface whilst being functional and extremely easy to clean.

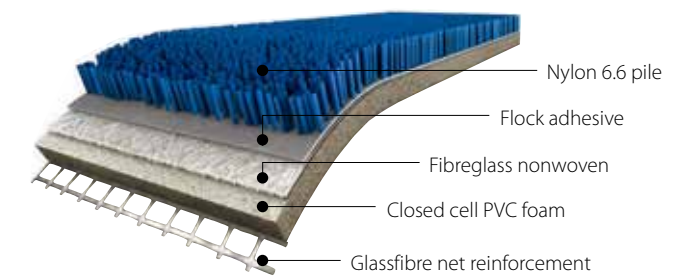
Having been awarded the prestigious Allergy UK™ Seal of Approval, Flotex FR is proven to reduce allergens, improving indoor air quality for passengers.

Flotex FR can be digitally printed. Its high definition quality and specialist printing technology allow for large endless pattern repeats and vivid lifelike colours. This creates a new dimension for Flotex FR and provides ultimate design flexibility for marine environments.

Where IMO certified material is required, please ensure that 'FR' is clearly noted on all orders.



Flotex FR construction



Flotex FR is IMO tested and approved, and wheelmarked in accordance with the Maritime Equipment Directive (MED).



1121/13 164.117/1121/WCL MED0364

FLOTEX FR – CUSTOM DESIGN SERVICE

Create your own masterpiece using our custom design service alongside our high definition printing technology. Our experienced designers can help at any stage in the design process, depending on what involvement you require.

If you are looking for design ideas, re-colouration of existing designs or help with the development of a unique design that works perfectly with your marine interior design scheme, then we have the resource to help. Alternatively, you can choose from over 900 existing references in our Colour, Vision and Designer collections.

STEPS IN THE CUSTOM DESIGN PROCESS:



FLOTEX FR OFFERS REAL DESIGN FREEDOM



Flotex FR | bespoke design

flotex® FR collections

Flotex Colour

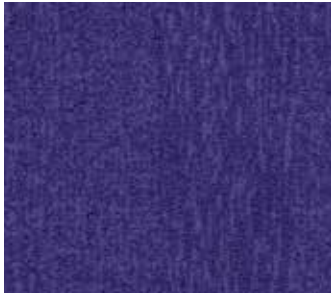
A collection of four semi plain designs. The full colour palette can be viewed on pages 14 and 15.

Metro



Available in 35 colourways

Penang



Available in 21 colourways

Calgary



Available in 22 colourways

Canyon



Available in 12 colourways



Flotex Colour FR | Metro grey

Flotex Vision

With over 500 individual items to choose from, plus the option to re-colour several designs, Flotex Vision is best viewed on our digital library (www.forbo-flooring.com/flotexvision) which is continuously updated. The designs fall into six broad categories of floral, image, lines, naturals, pattern and shape. High definition digital print designs that create superior textures and almost 3D like aesthetics.

Floral



Available in 118 references

Image



Available in 34 references

Lines



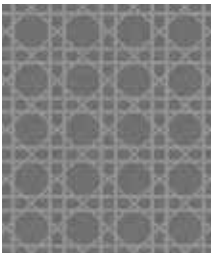
Available in 151 references

Naturals



Available in 57 references

Pattern



Available in 148 references
(excluding Van Gogh)

Shape



Available in 126 references

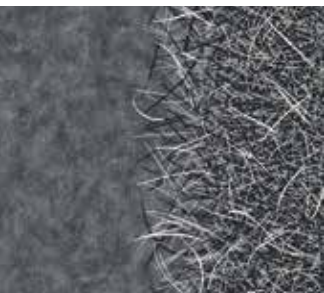


Flotex Vision FR | Weave linen

Flotex Designer

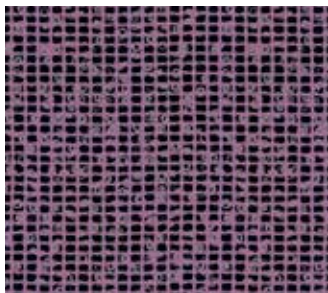
The collection includes designs based on famous designs by Philippe Starck, Tibor Reich, Sottsass, Hemingway and Van Gogh.

flotex® by STARCK



Available in 77 references

flotex® tiber



Available in 82 references

flotex® sottsass



Available in 61 references

HEMINGWAYDESIGN X forbo



Available in 4 references



Flotex Tibor FR | Ziggurat aqua

Symbols, lettering and company logos can be easily incorporated.

flotex® colour FR

					
445022 canyon limestone	290019 calgary carbon	290011 calgary quartz	482018 penang bamboo	445025 canyon earth	290017 calgary crystal
					
290012 calgary cement	445023 canyon linen	290026 calgary linen	482075 penang flax	246012 metro sand	482027 penang orchid
					
482007 penang zinc	246005 metro nimbus	246011 metro pebble	290007 calgary suede	290013 calgary caramel	482023 penang dusk
					
246006 metro grey	482005 penang smoke	482017 penang nimbus	246029 metro truffle	290023 calgary espresso	290022 calgary condor
					
482037 penang grey	445021 canyon stone	482004 penang mercury	482015 penang beige	482016 penang coral	246035 metro pink
					
290010 calgary ash	445020 canyon pumice	246002 metro tempest	482020 penang shale	445026 canyon garnet	246034 metro lilac
					
246007 metro ash	482031 penang ash	290002 calgary grey	246014 metro concrete	246009 metro pepper	482024 penang purple
					
482001 penang anthracite	246008 metro anthracite	445019 canyon slate	246010 metro chocolate	246015 metro cocoa	246016 metro grape

					
445024 canyon cloud	290021 calgary aqua	246018 metro mineral	482006 penang sage	445030 canyon sulphur	290006 calgary sahara
					
290001 calgary sky	445029 canyon seafoam	290009 calgary moss	290014 calgary lime	246013 metro amber	290008 calgary saffron
					
246004 metro gull	290004 calgary menthol	246037 metro apple	445027 canyon kelp	246036 metro gold	482019 penang ginger
					
290025 calgary riviera	482011 penang sapphire	246033 metro emerald	246019 metro citrus	290005 calgary melon	246017 metro berry
					
445028 canyon sapphire	246020 metro lagoon	246028 metro jade	246021 metro moss	246025 metro tangerine	246031 metro cherry
					
290015 calgary azure	482026 penang neptune	246024 metro carbon	482010 penang evergreen	290024 calgary fire	246026 metro red
					
246001 metro indigo	482116 penang azure	246032 metro petrol	246022 metro evergreen	246030 metro cinnamon	246027 metro burgundy

Codes shown are for standard Flotex.
Where IMO certified material is required, please ensure that ‘FR’ is clearly noted on all orders.

GO ONLINE AND DISCOVER
OVER 500 DESIGNS FOR YOUR FLOOR

STEP 1

Access: www.forbo-flooring.com/flotexvision

STEP 2

Choose the design category (e.g. Flotex Vision Floral)



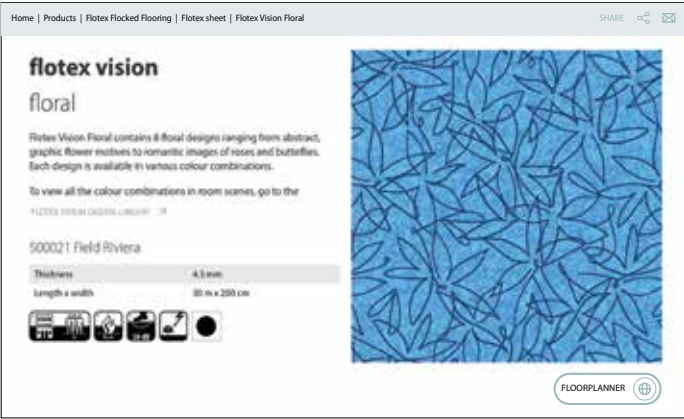
STEP 3

Click on the ‘**product**’ tab to see all the different design and colourway options available in that design category.



STEP 4

Choose the reference that you prefer (e.g. Flotex Vision – 500021 Field Riviera)



STEP 5

Click on the ‘**Floorplanner**’ link underneath the sample image – Here you can view that reference in a room setting. You can change the room scene and the flooring product/ design/colour in order to get a good feel for how that reference looks in a room setting.



STEP 6

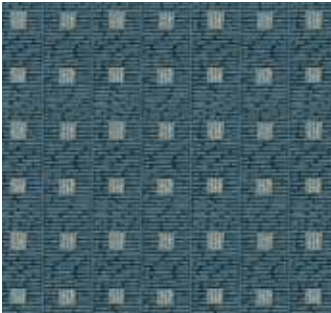
If you see a design that you like but the colourway options don’t work for your project then contact us at transport@forbo.com to enquire if it would be possible to re-colour that particular design. Alternatively you can look to create something completely bespoke.

Shown here is only a selection of the total designs available. Most designs are available in numerous different colourway options. Flotex Vision is best viewed on our ‘up-to-date’ digital library: www.forbo-flooring.com/flotexvision



flotex® vision FR

Shown here is only a selection of the total designs available. Most designs are available in numerous different colourway options. Flotex Vision is best viewed on our 'up-to-date' digital library: www.forbo-flooring.com/flotexvision



Grid – 12 colourways available



Collage – 10 colourways available



Silhouette – 12 colourways available



Contour – 14 colourways available



Flagstone – 1 colourway available



Botanical – 6 colourways available



Journeys – 17 colourways available



Star – 4 colourways available



Pebbles – 1 colourway available



Etch – 12 colourways available



Plaid – 18 colourways available



Wonderlab – 4 colourways available



Matrix – 8 colourways available



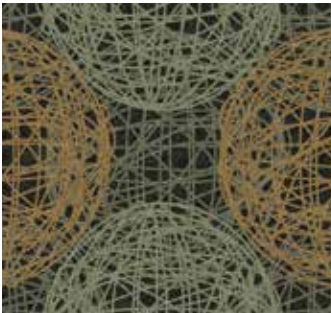
Farmhouse tile – 1 colourway available



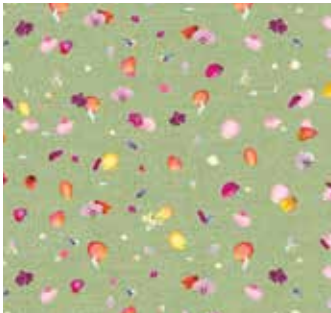
Ecosystems – 3 colourways available



Linear elm – 1 colourway available



Globe – 10 colourways available



Floret – 6 colourways available



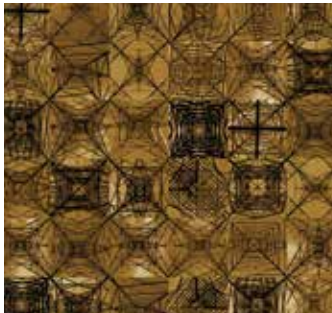
Van Gogh – 5 designs available



Grass – 1 colourway available



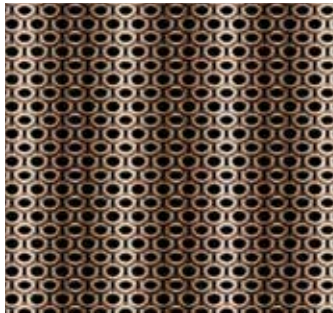
Orbit – 12 colourways available



Tension – 8 colourways available



Reclaimed oak – 1 colourway available



Ring Pull – 8 colourways available



Cord – 34 colourways available



Groove – 9 colourways available



Autumn – 12 colourways available



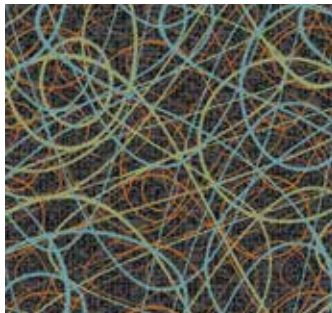
Van Gogh – 5 designs available



Mosaic – 5 colourways available



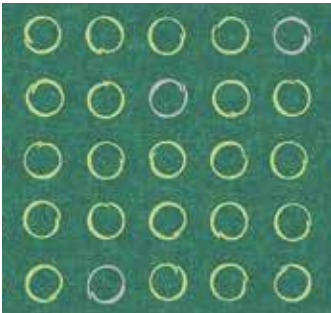
Chevron – 6 colourways available



Signature – 6 colourways available



Transit – 8 colourways available



Spin – 36 colourways available



Swirl – 9 colourways available



Van Gogh – 5 designs available



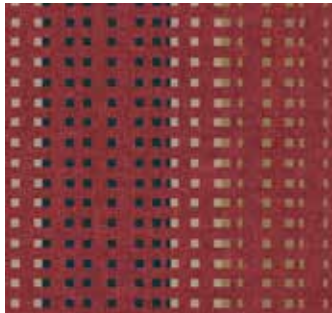
Firework – 14 colourways available



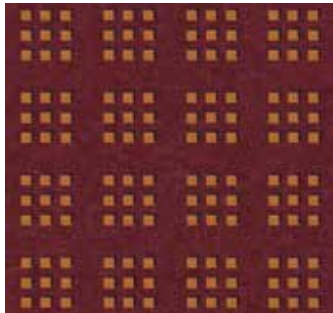
Blossom – 10 colourways available



Tangent – 8 colourways available



Trace – 22 colourways available



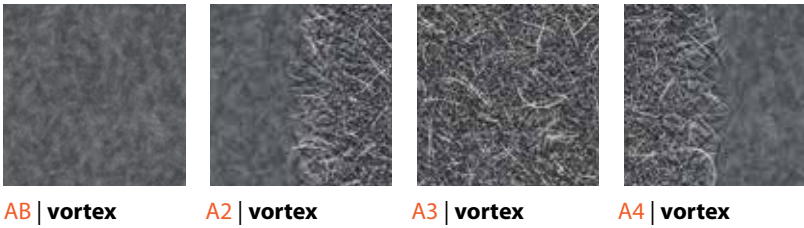
Cube – 16 colourways available

flotex® designer collection

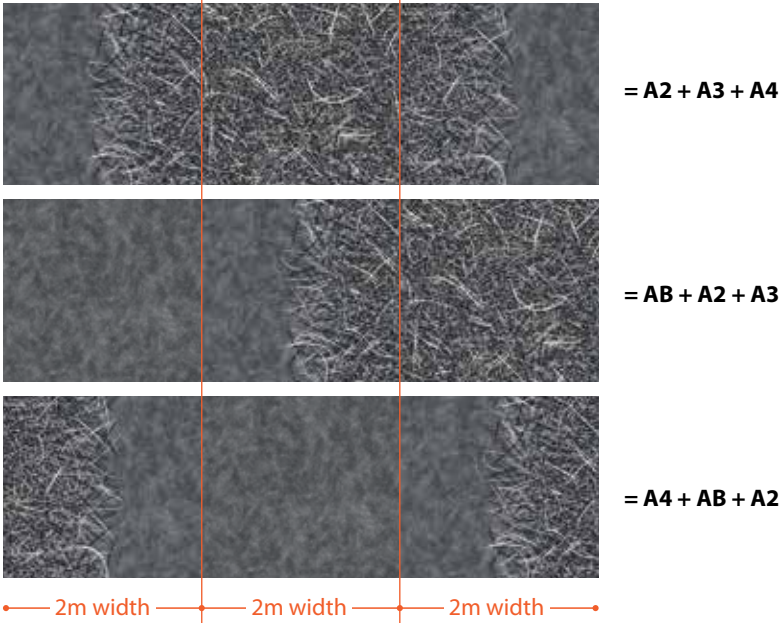
flotex®
BY STARCK®

The 3 systems

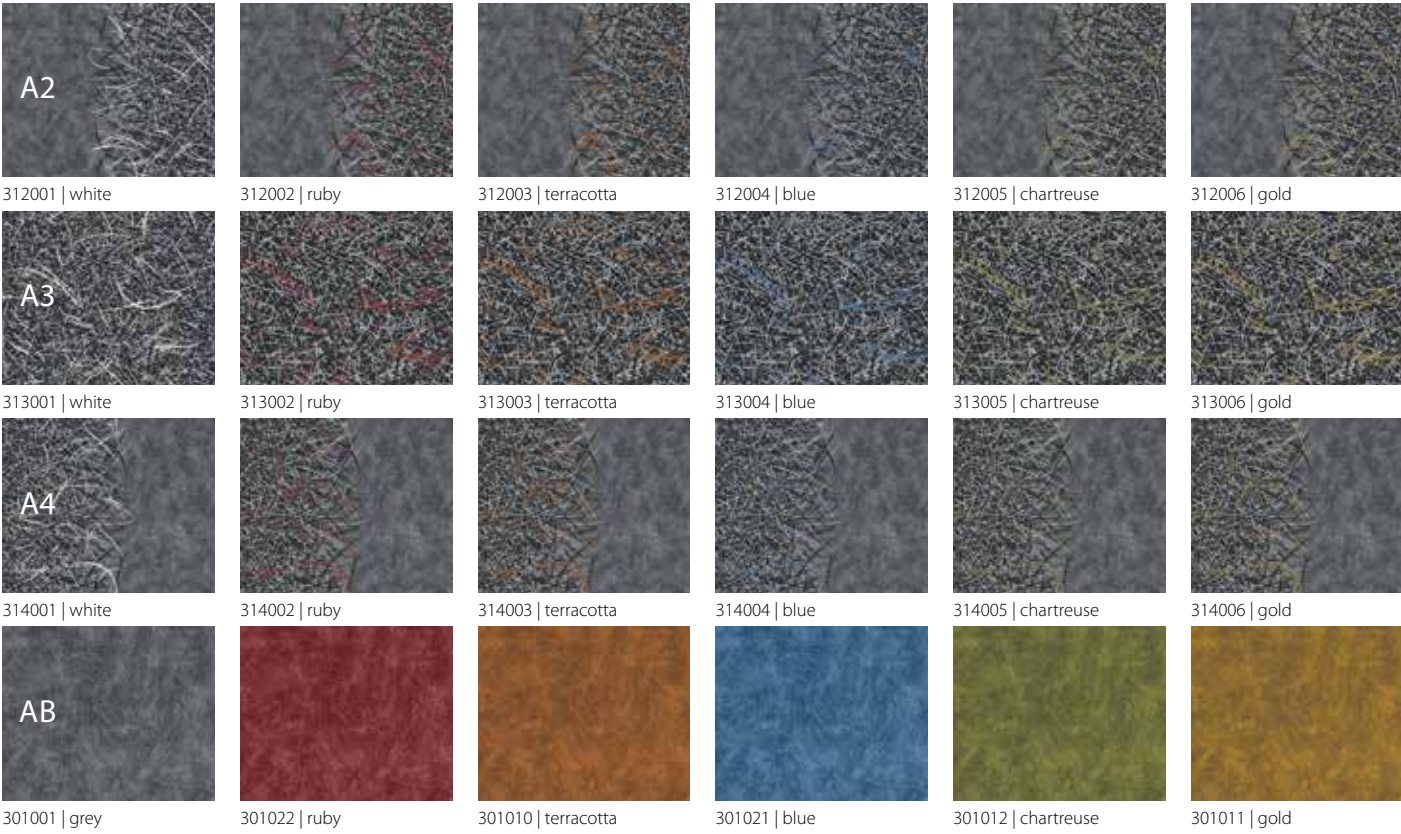
Philippe Starck created a collection of 3 systems, named Artist, Twilight and Vortex. Each of them comes in four separate parts that can be freely associated to create patterns for your project that adapts to your needs and preferences.



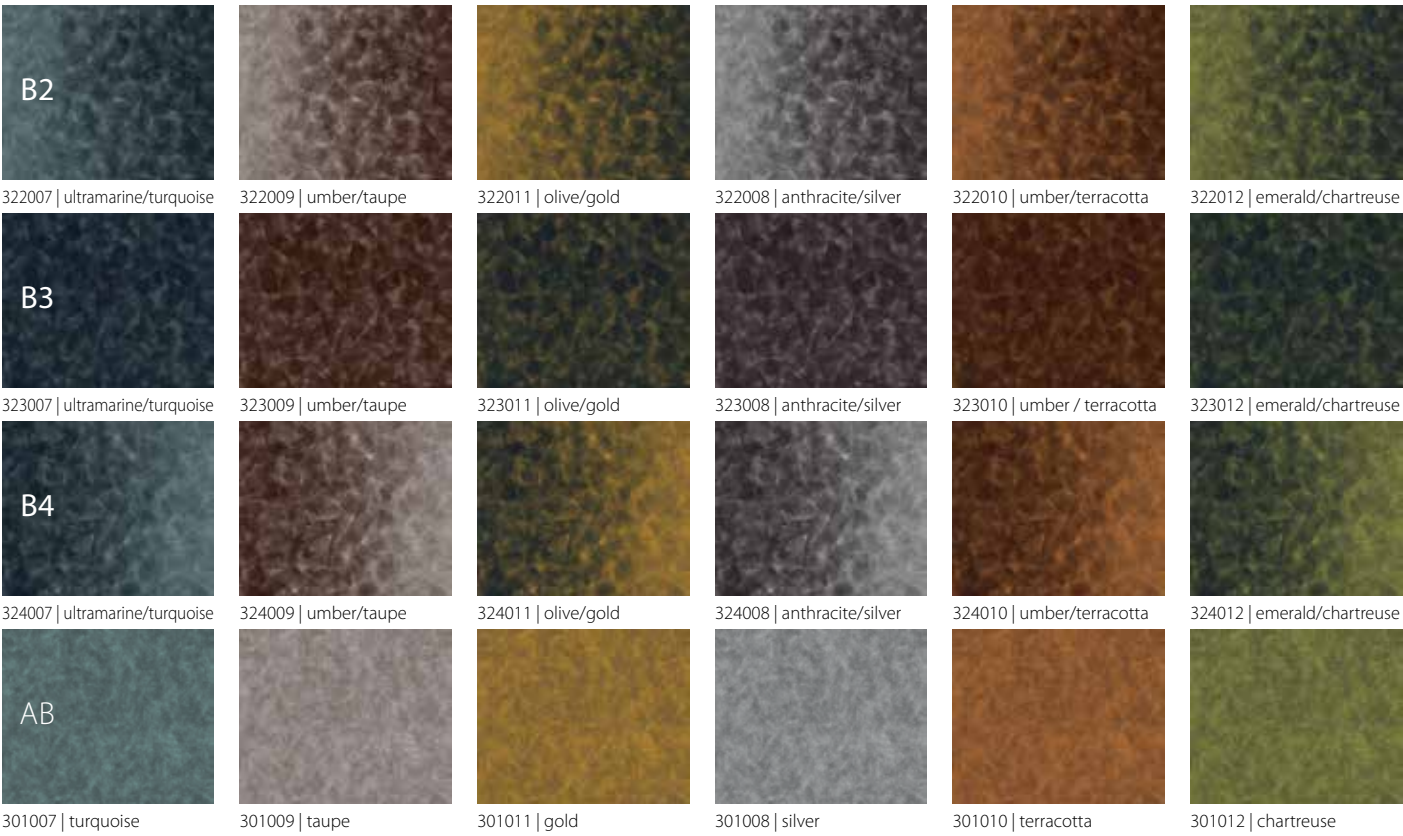
Inspiration with 3 sheets (6 metres width):



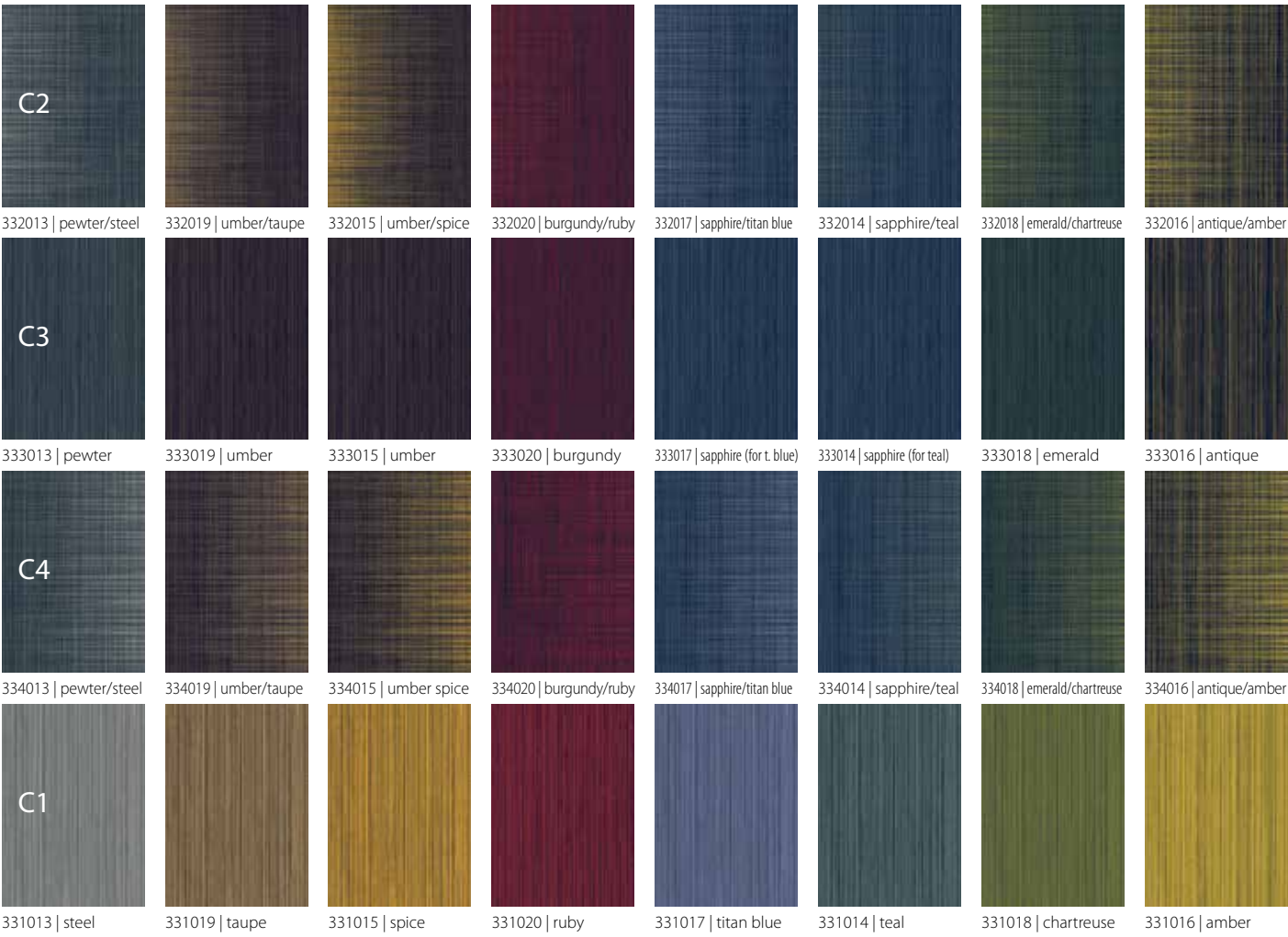
Vortex



Artist



Twilight

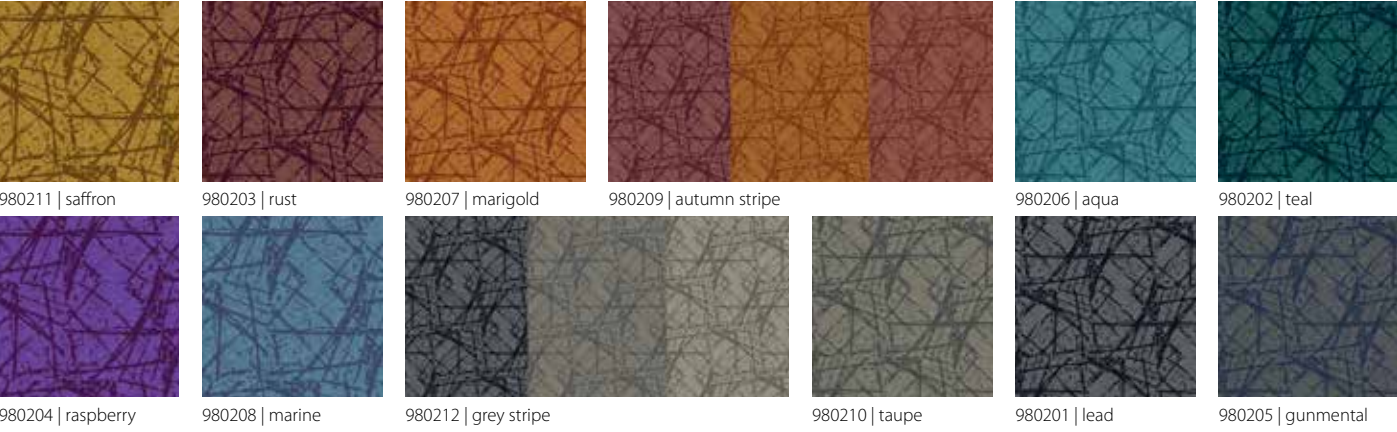


Codes shown are for standard Flotex. Where IMO certified material is required, please ensure that 'FR' is clearly noted on all orders.

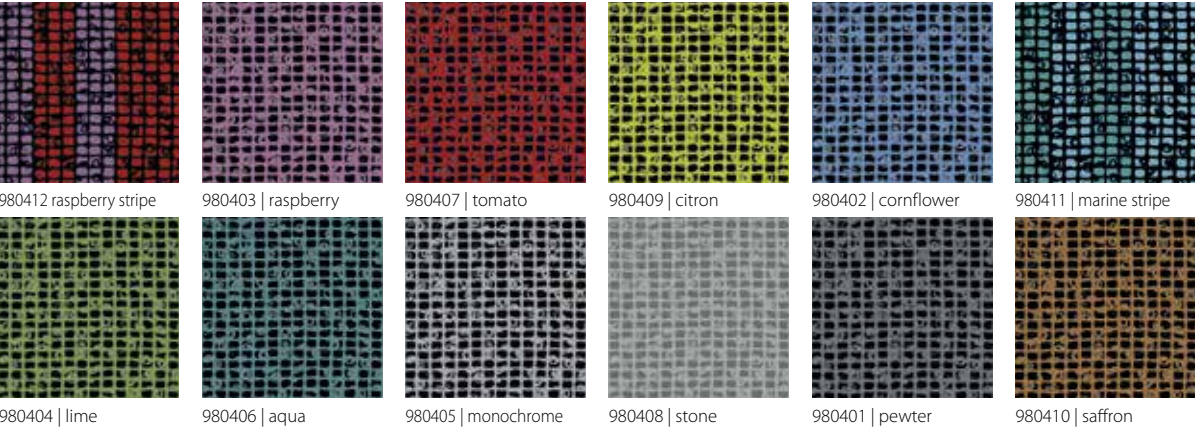
flotex® designer collection

flotex® tibor

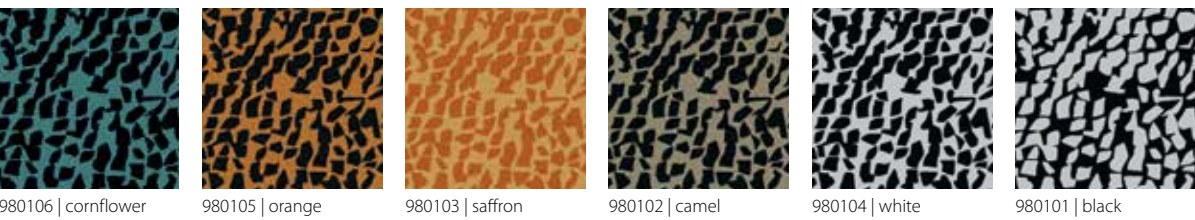
Ziggurat



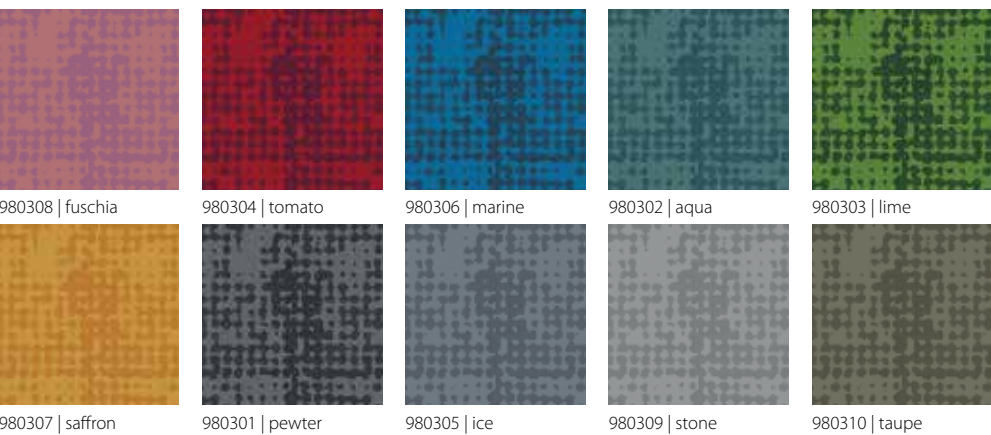
Mosaic



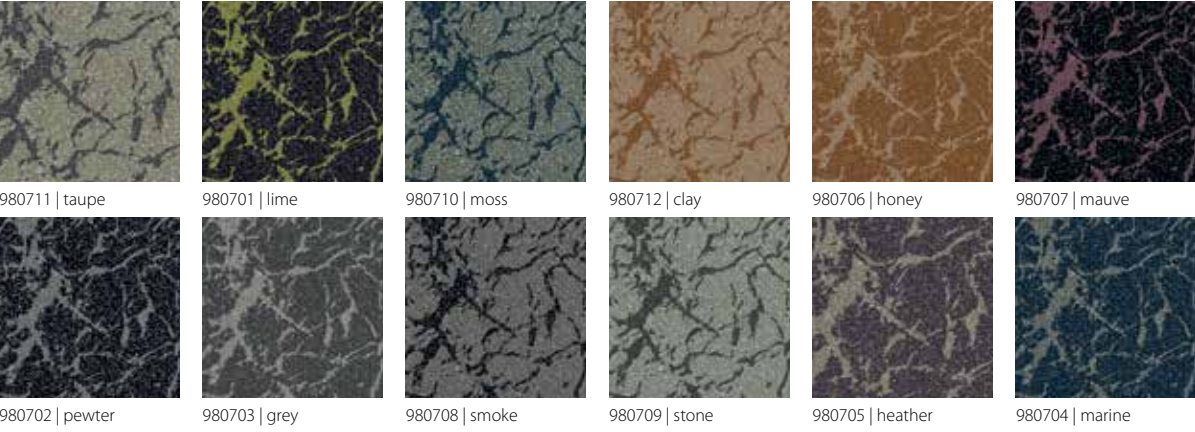
Quartz



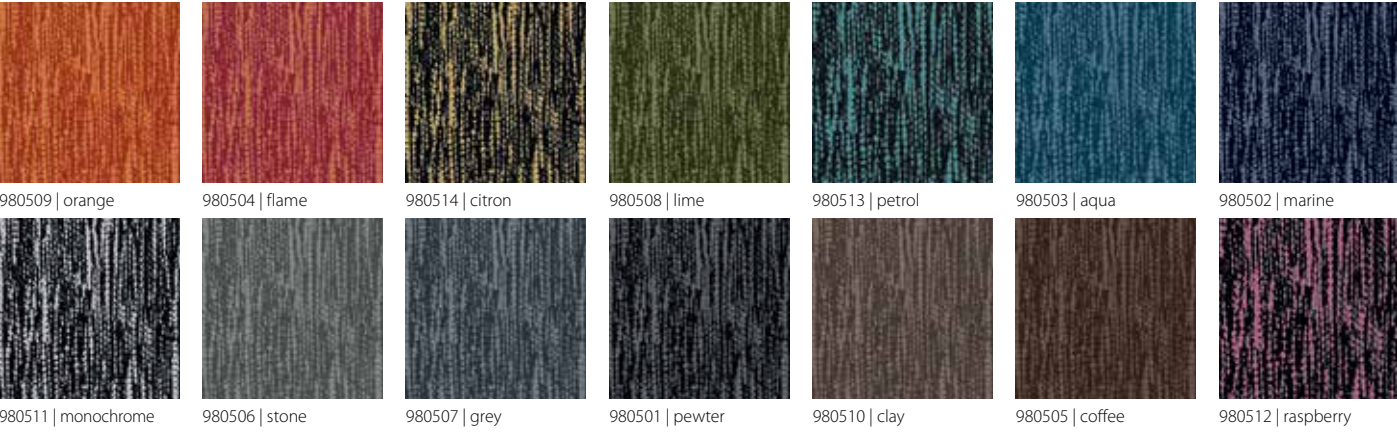
Tessello



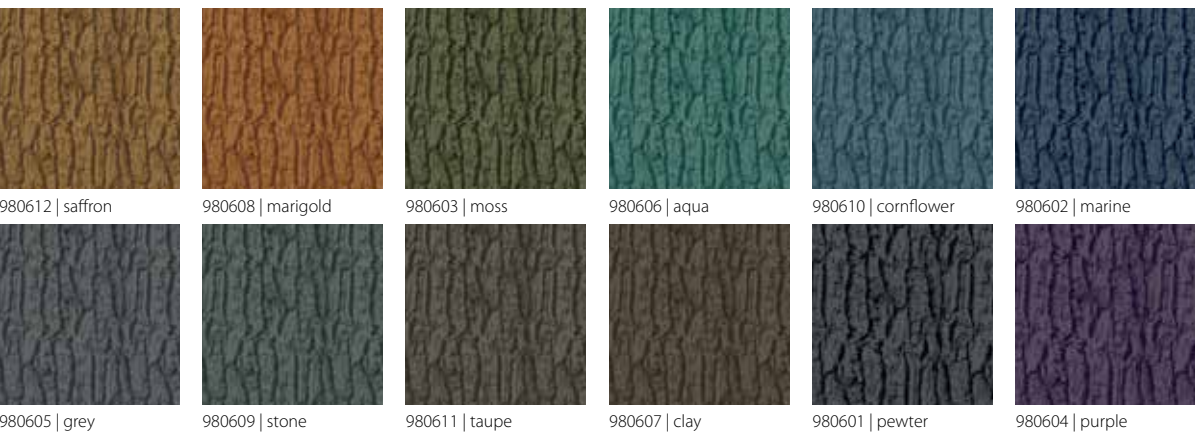
Onyx



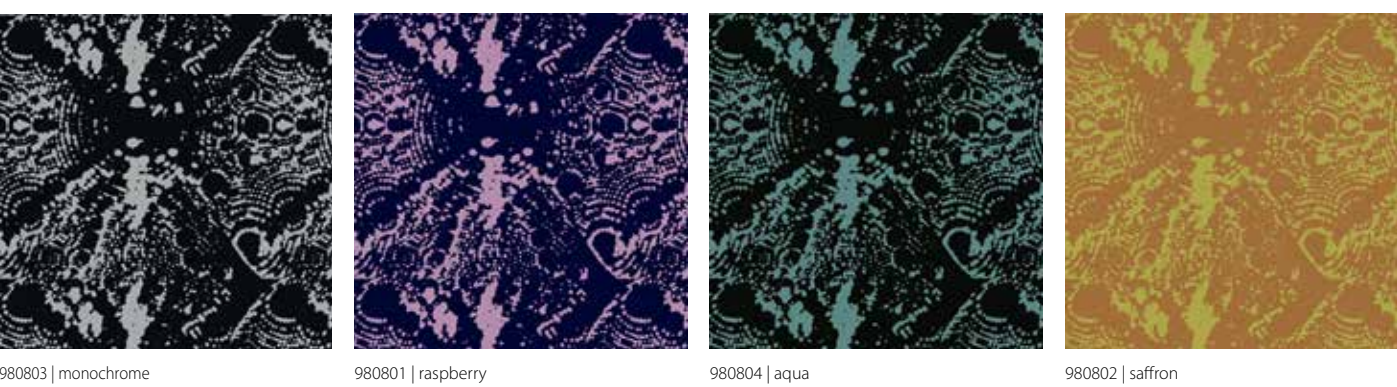
Tweedy



Arbor



Atomic



Codes shown are for standard Flotex. Where IMO certified material is required, please ensure that ‘FR’ is clearly noted on all orders.

flotex® designer collection

flotex® sottsass

Bacteria



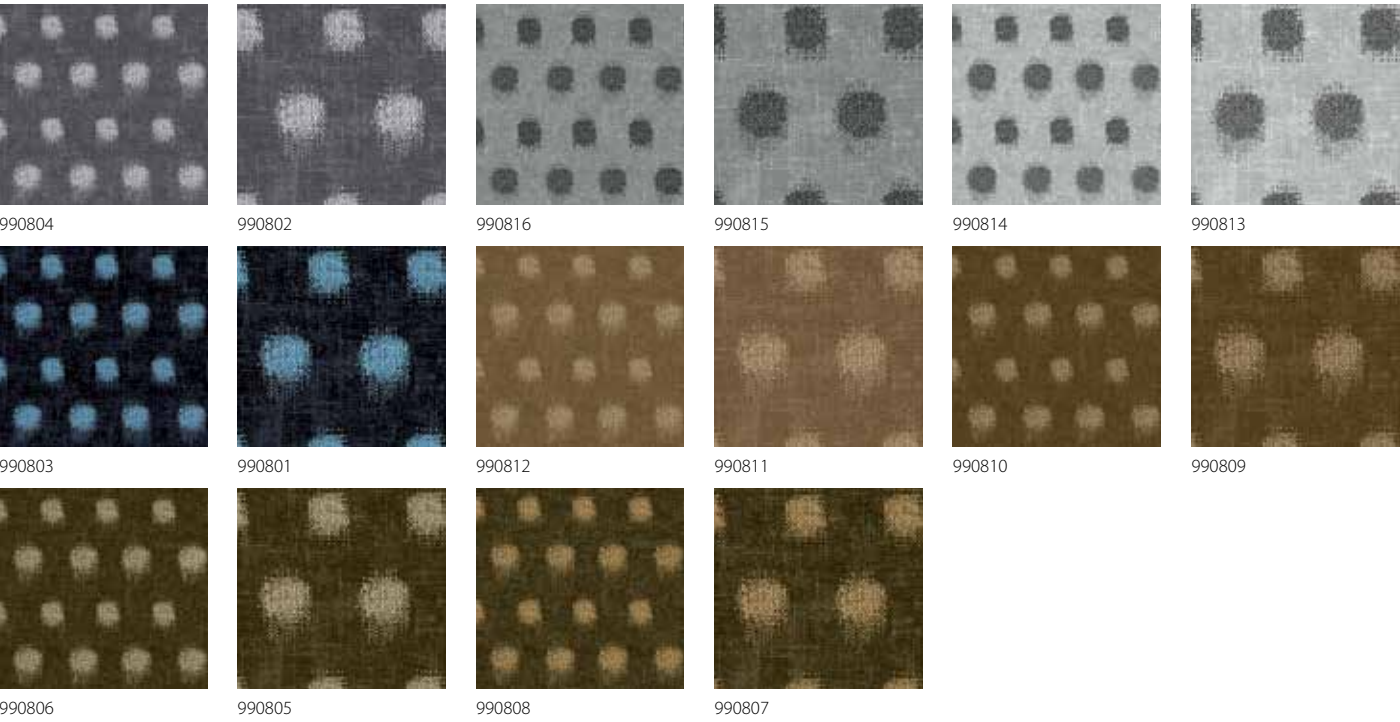
Terrazzo



Wool



Kasuri



HEMINGWAYDESIGN X **forbo**
FLOORING SYSTEMS



Codes shown are for standard Flotex. Where IMO certified material is required, please ensure that ‘FR’ is clearly noted on all orders.



Flotex Vision FR | Wonderlab chameleon

TECHNICAL SPECIFICATIONS – FLOTEX FR

Technical specifications

Flotex FR meets the requirements of EN 1307

	Total thickness	ISO 1765	Approx. 3.3 mm
	Wear classification	EN 1307	Class 33
	Roll width		200 cm
	Roll length		30 m
	Suitability for castor chairs	EN 985	Castor chair continuous use
Colour fastness ratings:			
	Light	EN ISO 105/B02	6
	Rubbing	EN ISO 105/X12	≥ 4
	Water	EN ISO 105/E01	≥ 4
	Pile material		100% polyamide
	Construction		Flocked textile floor covering
	Backing		Resilient waterproof backing
	Total weight	ISO 8543	Approx. 1225 gram/m²
	Pile thickness	ISO 1766	Approx. 2 mm
	Impact noise reduction	EN ISO 717-2	Δ Lw = approx. 22 dB
	Dimensional stability	ISO 2551	≤ 0.20%
	Flexibility	ISO 24344	No cracking (10 mm diameter Mandrel)
	Electrical resistance	ISO 10965	Approx. >10⁹Ω
	Comfort class	EN 1307	LC1

Flotex FR product meets the demands set by EN 14041

	Slip resistance	EN 13893	> 0.30
	Body voltage	ISO 6356	< 2.0 kV

Fire rating:*

IMO Resolution A653(16)	Pass
IMO Resolution MSC 307(88) Annex 1 Parts 2 and 5	Pass
US Coast Guard approval ref: 164.117/1121/WCL	MED0364

Flotex FR is made to order.

*IMO tested and approved using 3mm steel subfloor and IMO certified Eurocol 640, acrylic dispersion adhesive.

Final production might vary within commercial tolerances from sample. Manufacturing specifications subject to normal industry tolerances. Forbo reserves the right to improve the specification of its products without giving prior notice. Errors and omissions excepted.



Where IMO certified material is required, please ensure that 'FR' is clearly noted on all orders.

Forbo Flooring Systems is part of the Forbo Group, a global leader in flooring and movement systems, and offers a full range of flooring products for commercial and affordable housing and new build markets. High quality linoleum, vinyl, textile, flocked and entrance flooring products combine functionality, colour and design, offering total flooring solutions for any environment.



What to do now?

For more information about any of the products and services offered by Forbo Flooring Systems, to request samples/brochures or a visit then contact us:

Email: transport@forbo.com

Website: www.forbo-flooring.com/marine

Tel: **+44 (0)1773 744121**

Let us keep you up-to-date

 LinkedIn: **Forbo Flooring Transport**

 **@forbotransport**

TRANSPRESS

Sign up for our quarterly marine newsletter via our website:

www.forbo-flooring.com/transport

- Product information
- Design inspiration
- Forbo transport news
- Industry news

All countries

Forbo Flooring UK Limited
High Holborn Road
Ripley
Derbyshire
DE5 3NT
UK
T: +44 (0) 1773 744121
E-mail: transport@forbo.com
www.forbo-flooring.com/marine

Germany

Forbo Flooring GmbH
Steubenstraße 27
D-33100 Paderborn
Deutschland
T: +49 5251 1803-0
www.forbo-flooring.de



France

Forbo Sarlino SAS
63, rue Gosset
BP 62717
51055 Reims Cedex
France
T: +33 3 26 77 30 30
www.forbo-flooring.fr

USA

Forbo Flooring NA
Humboldt Industrial Park
8 Maplewood Drive
PO Box 667
Hazleton, PA 18202
USA
T: 1-800-842-7839
www.forboflooringna.com